

Removing and replacing an FRU

This section presents exploded figures with the instructions to indicate how to remove and replace the FRU. Make sure to observe the following general rules:

1. Do not attempt to service any computer unless you have been trained and certified. An untrained person runs the risk of damaging parts.
2. Before replacing any FRU, review "FRU replacement notices" on page 32.
3. Begin by removing any FRUs that have to be removed before the failing FRU. Any of such FRUs are listed at the top of the page. Remove them in the order in which they are listed.
4. Follow the correct sequence in the steps to remove the FRU, as given in the figures by the numbers in square callouts.
5. When turning a screw to replace an FRU, turn it in the direction as given by the arrow in the figure.
6. When removing the FRU, move it in the direction as given by the arrow in the figure.
7. To put the new FRU in place, reverse the removal procedures and follow any of the notes that pertain to replacement. For information about connecting and arranging internal cables, see "Locations" on page 65.
8. When replacing an FRU, use the correct screw as shown in the procedures.

DANGER

Before removing any FRU, turn off the computer, unplug all power cords from electrical outlets, remove the battery pack, and then disconnect any of the interconnecting cables.

Attention: After replacing an FRU, do not turn on the computer until you have made sure that all screws, springs, and other small parts are in place and none are loose inside the computer. Verify this by shaking the computer gently and listening for rattling sounds. Metallic parts or metal flakes can cause electrical short circuits.

Attention: The system board is sensitive to, and can be damaged by, electrostatic discharge. Before touching it, establish personal grounding by touching a ground point with one hand or using an electrostatic discharge (ESD) strap (P/N 6405959) to remove potential shock reasons.

// IdeaPad S10-3c Hardware Maintenance Manual

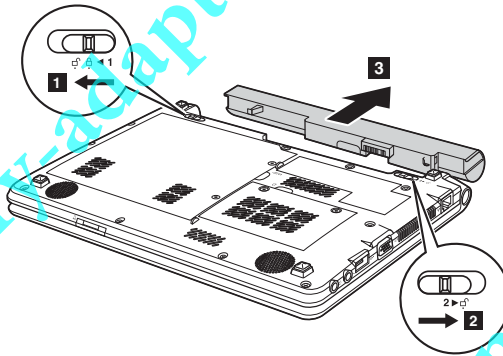
1010 Battery pack

⚠ DANGER

Only use the battery specified in the parts list for your computer. Any other battery could ignite or explode.

Figure 1. Removal steps of battery pack

Unlock the battery release lever **1**. Holding the battery release lever in the unlocked position **2**, remove the battery pack in the direction shown by arrow **3**.



When installing: Install the battery pack along the slide rails of the slot. Then make sure that the battery release lever is in the locked position.

Lenovo IdeaPad S10-3c

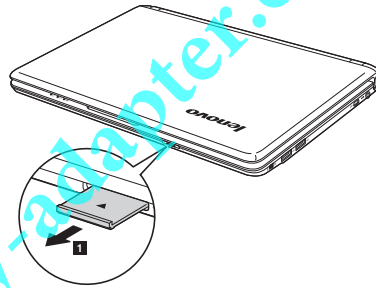
1020 Dummy cards

For access, remove this FRU:

- "1010 Battery pack" on page 34

Figure 2. Removal steps of dummy cards

Remove the dummy card in the direction shown by arrow ■.



// IdeaPad S10-3c Hardware Maintenance Manual

1030 Hard disk drive (HDD) slot cover and HDD

For access, remove this FRU:

- "1010 Battery pack" on page 34

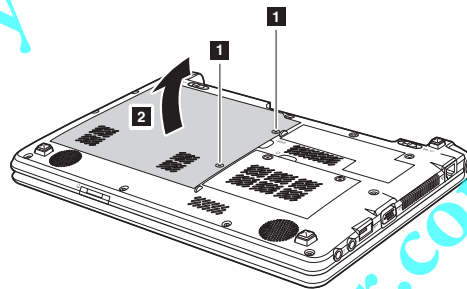
Attention:

- **Do not drop the hard disk drive or apply any physical shock to it.** The hard disk drive is sensitive to physical shock. Improper handling can cause damages and permanent loss of data.
- Before removing the drive, suggest the customer to backup all the information on it if possible.
- Never remove the drive while the system is operating or is in suspend mode.

Figure 3. Removal steps of HDD slot cover and HDD

Note: Loosen the screws 1, but do not remove them.

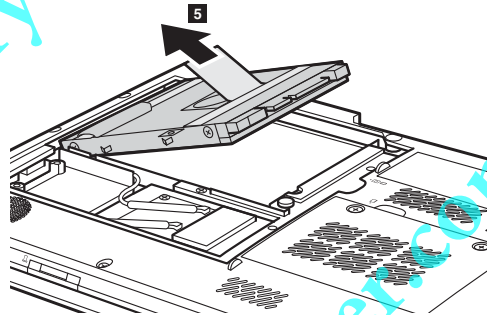
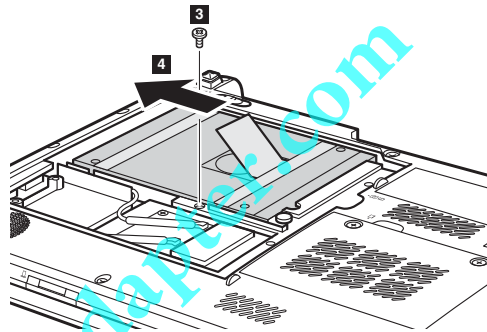
Remove the HDD slot cover in the direction shown by arrow 2.



Lenovo IdeaPad S10-3c

Figure 3. Removal steps of HDD slot cover and HDD (continued)

Remove the screw **3**, pull the tab up in the direction shown by arrows **4** **5** to remove the hard disk drive from the slot.



| Step | Screw (quantity) | Color | Torque |
|----------|----------------------------------------|-------|-----------|
| 3 | M2 × 3 mm, flat-head, nylok-coated (1) | Black | 1.5 kgfcm |

When installing: Make sure that the HDD connector is attached firmly.

// IdeaPad S10-3c Hardware Maintenance Manual


1040 DIMM cover

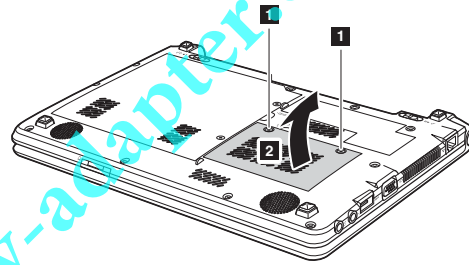
For access, remove this FRU:

- "1010 Battery pack" on page 34

Figure 4. Removal steps of thermal slot cover

Note: Loosen the screws , but do not remove them.

Remove the thermal slot cover in the direction shown by arrow .



Lenovo IdeaPad S10-3c

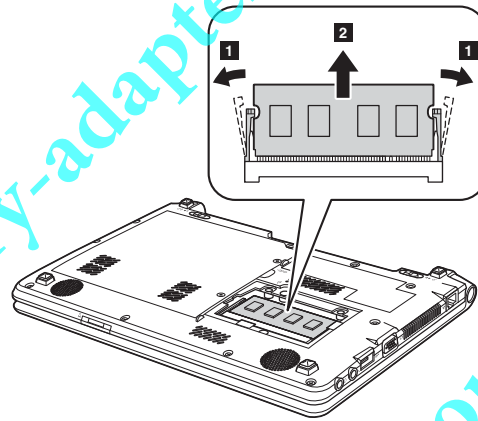
1050 DIMM

For access, remove these FRUs in order:

- "1010 Battery pack" on page 34
- "1040 DIMM cover" on page 38

Figure 5. Removal steps of DIMM

Release the two latches on both edges of the socket at the same time in the direction shown by arrows **1**, and then unplug the DIMM in the direction shown by arrow **2**.



When installing: Insert the notched end of the DIMM into the socket. Push the DIMM firmly, and pivot it until it snaps into the place. Make sure that it is firmly fixed in the slot and difficult to be moved.

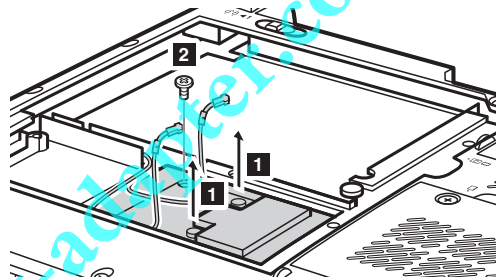
// IdeaPad S10-3c Hardware Maintenance Manual

1060 PCI Express Mini Card for wireless LAN/WAN

For access, remove these FRUs in order:

- "1010 Battery pack" on page 34
- "1030 Hard disk drive (HDD) slot cover and HDD" on page 36

Figure 6. Removal steps of PCI Express Mini Card for wireless LAN/WAN



Disconnect the two wireless LAN cables (black, white) ■, and then remove the screw ■.

In step ■, unplug the jacks by using the removal tool antenna RF connector (P/N: 08K7159), or pick up the connectors with your fingers and gently unplug them in the direction shown by arrows.

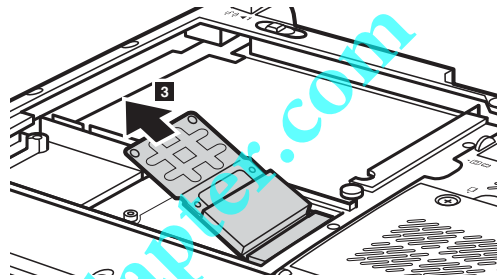
Notes: wireless LAN card has 2 cables in step ■.
wireless LAN card in some models may have 3 cables in step ■.

| Step | Screw (quantity) | Color | Torque |
|------|----------------------------------------|-------|-----------|
| 2 | M2 × 3 mm, flat-head, nylok-coated (1) | Black | 1.5 kgfcm |

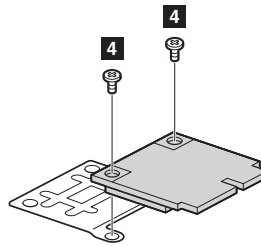
Lenovo IdeaPad S10-3c

Figure 6. Removal steps of PCI Express Mini Card for wireless LAN/WAN (continued)

Remove the card with bracket in the direction shown by arrow 3.



Remove two screws 4, and then remove the card from the bracket.



When installing:

- In models with a wireless LAN card that has two antenna connectors, plug the black cable (1st) (MAIN) into the jack labeled 1, and the white cable (2nd) (AUX) into jack labeled 2 on the card.
- In models with a wireless LAN card that has three antenna connectors, plug the black cable (1st) (MAIN) into the jack labeled 1, the grey cable (3rd) into jack labeled 3, and the white cable (2nd) (AUX) into jack labeled 2 on the card.

// IdeaPad S10-3c Hardware Maintenance Manual

1070 Keyboard cover, keyboard and LED board

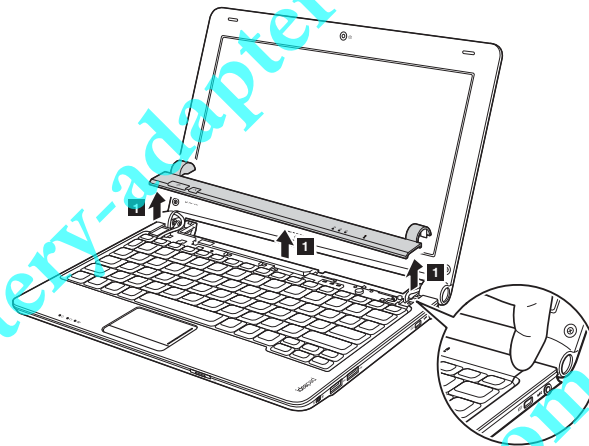
For access, remove this FRU:

- "1010 Battery pack" on page 34

Figure 7. Removal steps of keyboard cover, keyboard and LED board

Open the LCD at an angle about 120°.

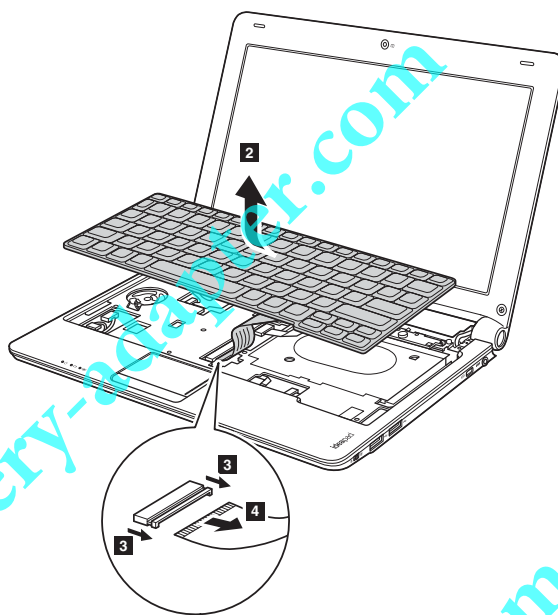
Lift the keyboard cover with fingers in the direction shown by arrows ■.



Lenovo IdeaPad S10-3c

Figure 7. Removal steps of keyboard cover, keyboard and LED board

Lift the keyboard a little **2**, and then detach the connector in the direction shown by arrows **3** **4**.

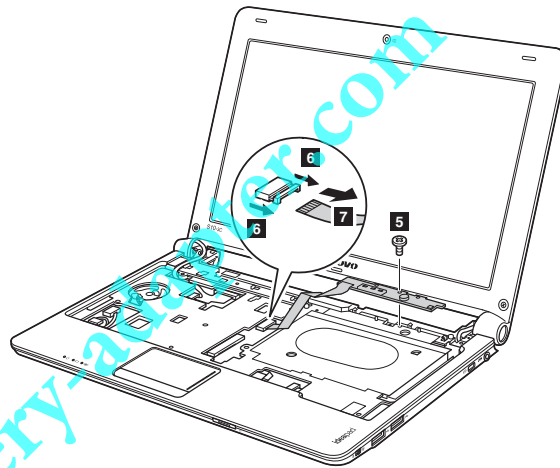


When installing: Make sure that the FPC connector is attached firmly.

// IdeaPad S10-3c Hardware Maintenance Manual

Figure 7. Removal steps of keyboard cover, keyboard and LED board (continued)

Remove one screw **5**, detach the LED connector in the direction shown by arrows **6** **7**, and then remove the LED board.



| Step | Screw (quantity) | Color | Torque |
|----------|----------------------------------------|-------|-----------|
| 5 | M2 × 3 mm, flat-head, nylok-coated (1) | Black | 1.5 kgfcm |

Lenovo IdeaPad S10-3c

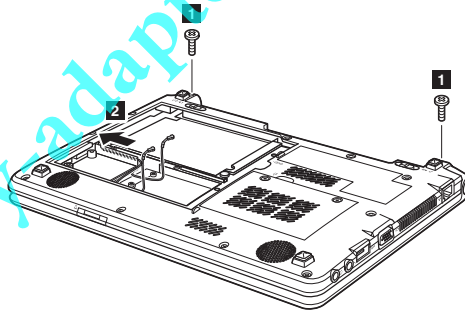
1080 LCD unit

For access, remove these FRUs in order:

- "1010 Battery pack" on page 34
- "1030 Hard disk drive (HDD) slot cover and HDD" on page 36
- "1060 PCI Express Mini Card for wireless LAN/WAN" on page 40
- "1070 Keyboard cover, keyboard and LED board" on page 42

Figure 8. Removal steps of LCD unit

Remove two screws **1**, and release the antenna cables from the cable guides in the direction shown by arrow **2**.

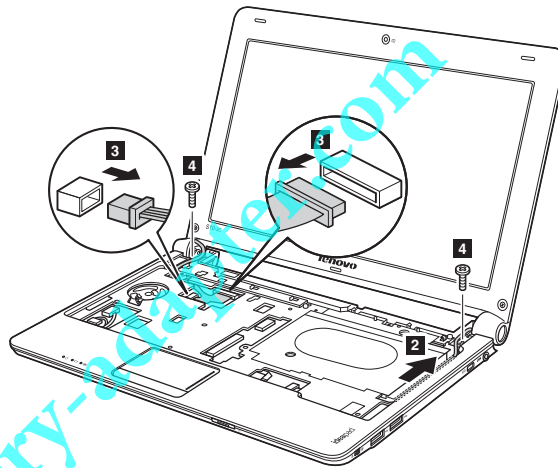


| Step | Screw (quantity) | Color | Torque |
|----------|------------------------------------------|-------|---------|
| 1 | M2.5 × 6 mm, flat-head, nylok-coated (2) | Black | 2 kgfcm |

// IdeaPad S10-3c Hardware Maintenance Manual

Figure 8. Removal steps of LCD unit (continued)

Detach the LCD connectors in the direction shown by arrows **3**. Remove two screws **4**.



| Step | Screw (quantity) | Color | Torque |
|------|------------------------------------------|-------|---------|
| 4 | M2.5 × 6 mm, flat-head, nylok-coated (2) | Black | 2 kgfcm |

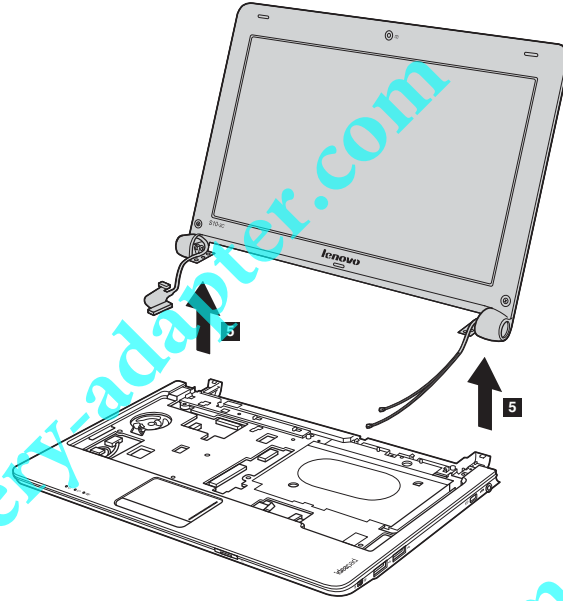
When installing:

- Route the antenna cables along the cable guides. As you route the cables, make sure that they are not subjected to any tension. Tension could cause the cables to be damaged by the cable guides, or a wire to be broken.
- Make sure that the LCD connectors are attached firmly and make sure that you do not pinch the antenna cables when you attach the LCD assembly. Route the LCD cable along the cable guides.

Lenovo IdeaPad S10-3c

Figure 8. Removal steps of LCD unit (continued)

Remove the LCD unit in the direction shown by arrows 5.



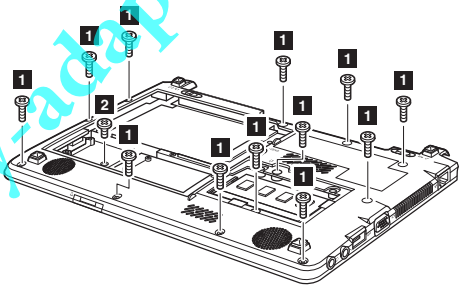
// IdeaPad S10-3c Hardware Maintenance Manual

1090 Keyboard bezel, speakers and bluetooth card

For access, remove these FRUs in order:

- “1010 Battery pack” on page 34
- “1030 Hard disk drive (HDD) slot cover and HDD” on page 36
- “1040 DIMM cover” on page 38
- “1060 PCI Express Mini Card for wireless LAN/WAN” on page 40
- “1070 Keyboard cover, keyboard and LED board” on page 42
- “1080 LCD unit” on page 45

Figure 9. Removal steps of Keyboard bezel, speakers and bluetooth card
Remove twelve screws **1** and one screw **2** on the bottom.

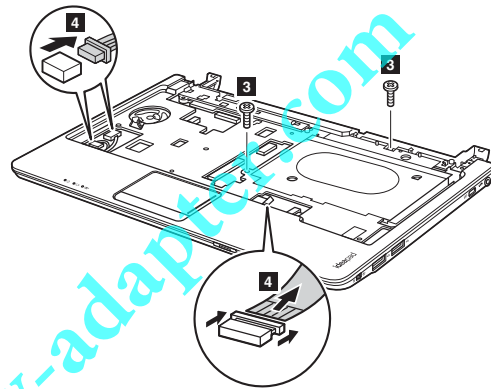


| Step | Screw (quantity) | Color | Torque |
|----------|-------------------------------------------|-------|-----------|
| 1 | M2.5 × 6 mm, flat-head, nylok-coated (12) | Black | 2 kgfcm |
| 2 | M2 × 3 mm, flat-head, nylok-coated (1) | Black | 1.5 kgfcm |

Lenovo IdeaPad S10-3c

Figure 9. Removal steps of Keyboard bezel, speakers and bluetooth card (continued)

Remove two screws **3**. Detach the speakers connector, the bluetooth card connector and the touchpad connector in the direction shown by arrows **4**.



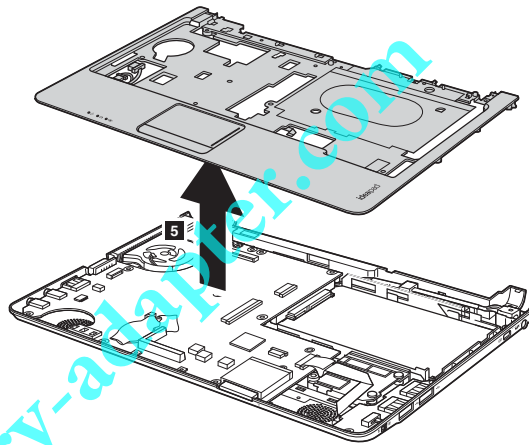
| Step | Screw (quantity) | Color | Torque |
|------|------------------------------------------|-------|---------|
| 3 | M2.5 × 6 mm, flat-head, nylok-coated (2) | Black | 2 kgfcm |

When installing: Make sure that all the connectors are attached firmly.

// IdeaPad S10-3c Hardware Maintenance Manual

Figure 9. Removal steps of Keyboard bezel, speakers and bluetooth card
(continued)

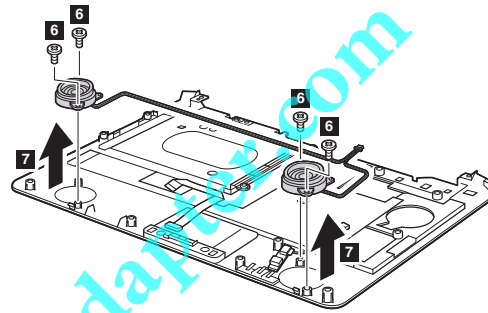
Remove the keyboard bezel in the direction shown by arrow **5**.



Lenovo IdeaPad S10-3c

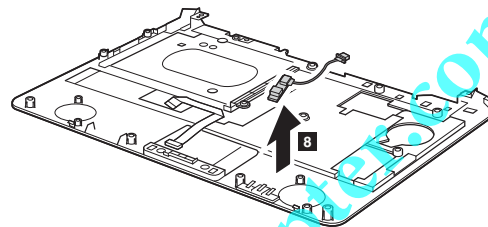
Figure 9. Removal steps of Keyboard bezel, speakers and bluetooth card (continued)

Remove four screws **6**, release the speaker cables from the cable guides, and then remove the speakers **7**.



| Step | Screw (quantity) | Color | Torque |
|----------|----------------------------------------|-------|-----------|
| 6 | M2 × 4 mm, flat-head, nylok-coated (4) | Black | 1.2 kgfcm |

Remove the bluetooth card **8**.



// IdeaPad S10-3c Hardware Maintenance Manual

1100 System board

Important notices for handling the system board:

When handling the system board, bear the following in mind.

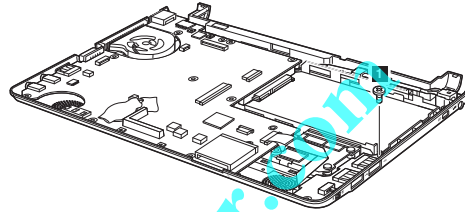
- Be careful not to drop the system board on a bench top that has a hard surface, such as metal, wood, or composite.
- Avoid rough handling of any kind.
- In the whole process, make sure not to drop or stack the system board.
- If you put a system board down, make sure to put it only on a padded surface such as an ESD mat or conductive corrugated material.

For access, remove these FRUs in order:

- "1010 Battery pack" on page 34
- "1020 Dummy cards" on page 35
- "1030 Hard disk drive (HDD) slot cover and HDD" on page 36
- "1040 DIMM cover" on page 38
- "1050 DIMM" on page 39
- "1060 PCI Express Mini Card for wireless LAN/WAN" on page 40
- "1070 Keyboard cover, keyboard and LED board" on page 42
- "1080 LCD unit" on page 45
- "1090 Keyboard bezel, speakers and bluetooth card" on page 48

Lenovo IdeaPad S10-3c

Figure 10. Removal steps of system board
Remove one screw ■.

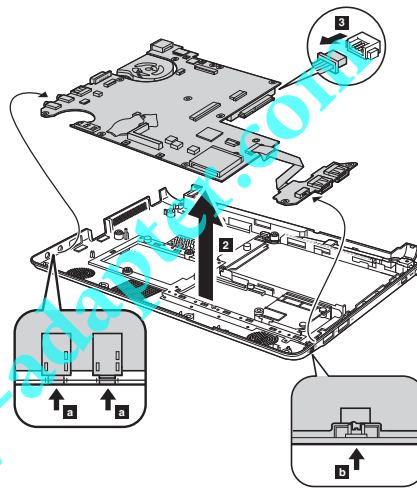


| Step | Screw (quantity) | Color | Torque |
|------|----------------------------------------|-------|-----------|
| ■ | M2 × 3 mm, flat-head, nylok-coated (1) | Black | 1.5 kgfcm |

// IdeaPad S10-3c Hardware Maintenance Manual

Figure 10. Removal steps of system board (continued)

Lift the system board in the direction shown by arrow **2**, unplug the power assembly connector **3**, and then Remove the system board.



When installing: When attaching the system board to the base cover, adjust the placement of the wireless radio switch as shown in **b**, and make sure that both of the audio jack and the microphone jack are attached to the holes on the base cover as shown in **a**. Improper placement of the switch or those jacks might cause a damage.



Lenovo IdeaPad S10-3c

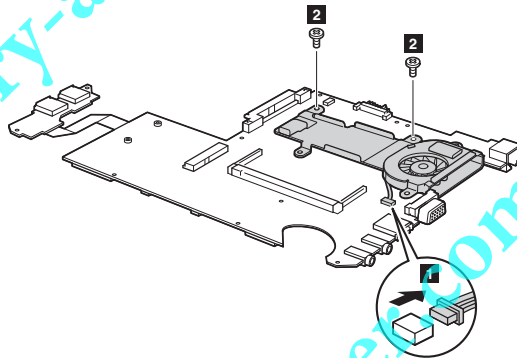
1110 Fan assembly and Heat Sink assembly

For access, remove these FRUs in order:

- "1010 Battery pack" on page 34
- "1020 Dummy cards" on page 35
- "1030 Hard disk drive (HDD) slot cover and HDD" on page 36
- "1040 DIMM cover" on page 38
- "1050 DIMM" on page 39
- "1060 PCI Express Mini Card for wireless LAN/WAN" on page 40
- "1070 Keyboard cover, keyboard and LED board" on page 42
- "1080 LCD unit" on page 45
- "1090 Keyboard bezel, speakers and bluetooth card" on page 48
- "1100 System board" on page 52

Figure 11. Removal steps of fan assembly and heat sink assembly

Unplug the connector in the direction shown by arrow . Remove two screws .



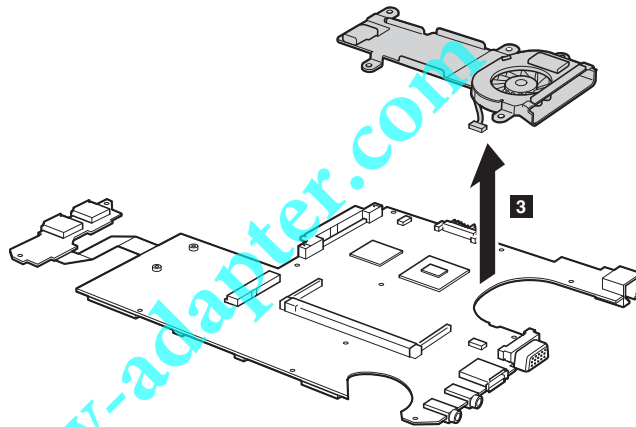
When installing: Make sure that the fan connector is attached firmly to the system board.

| Step | Screw (quantity) | Color | Torque |
|-------------------------------------------------------------------------------------|----------------------------------------|-------|-----------|
|  | M2 × 3 mm, flat-head, nylok-coated (2) | Black | 1.5 kgfcm |

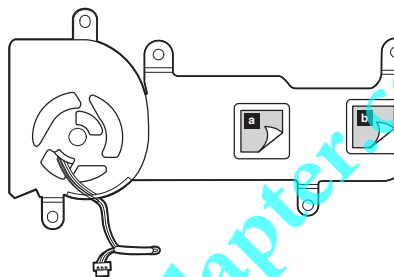
// IdeaPad S10-3c Hardware Maintenance Manual

Figure 11. Removal steps of fan assembly and heat sink assembly (continued)

Lift the fan assembly and heat sink assembly in the direction shown by arrow 3. Be careful not to damage the connector.



Attention: Do not handle the heat sink assembly roughly. Improper handling can cause distortion or deformation and imperfect contact with components.



When installing:

- Before you attach the fan assembly to the computer, apply thermal grease, at an amount of 0.2 grams, to the **a** part shown in the figure above. Either too much or too less grease application can cause a thermal problem due to imperfect contact with a component. You also need to peel the thin film off from the rubber **b**.

Lenovo IdeaPad S10-3c

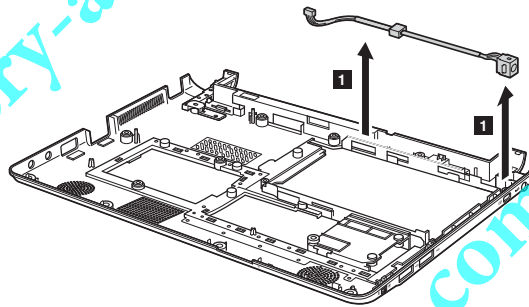
1120 Base cover

For access, remove these FRUs in order:

- "1010 Battery pack" on page 34
- "1020 Dummy cards" on page 35
- "1030 Hard disk drive (HDD) slot cover and HDD" on page 36
- "1040 DIMM cover" on page 38
- "1050 DIMM" on page 39
- "1060 PCI Express Mini Card for wireless LAN/WAN" on page 40
- "1070 Keyboard cover, keyboard and LED board" on page 42
- "1080 LCD unit" on page 45
- "1090 Keyboard bezel, speakers and bluetooth card" on page 48
- "1100 System board" on page 52

Figure 12. Removal steps of base cover

Remove the power assembly in the direction shown by arrows ■.



When installing: Make sure that the power connector is attached firmly.

// IdeaPad S10-3c Hardware Maintenance Manual

Note: Applying labels to the base cover

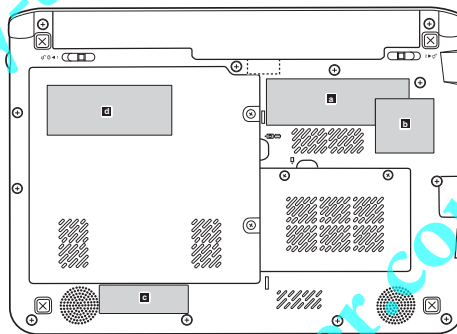
The new base cover FRU is shipped with a kit containing labels of several kinds. When you replace the base cover, you need to apply the following label:

The following labels need to be peeled off from the old base cover, and need to be put on the new base cover.

- a** Rating label
- b** System info & Machine barcode label
- c** PRC label (China)
- d** COA label (Russia)

For some models, you also need to apply one or two FCC labels. Check the old base cover; if it has one or two FCC labels, find duplicates of them in the label kit and apply them to the new base cover.

For the location of each label, refer to the following figure:



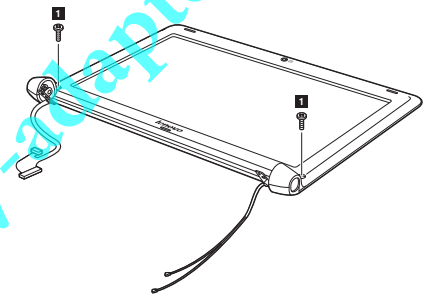
Lenovo IdeaPad S10-3c

1130 LCD front bezel

- For access, remove these FRUs in order:
- “1010 Battery pack” on page 34
 - “1030 Hard disk drive (HDD) slot cover and HDD” on page 36
 - “1060 PCI Express Mini Card for wireless LAN/WAN” on page 40
 - “1070 Keyboard cover, keyboard and LED board” on page 42
 - “1080 LCD unit” on page 45

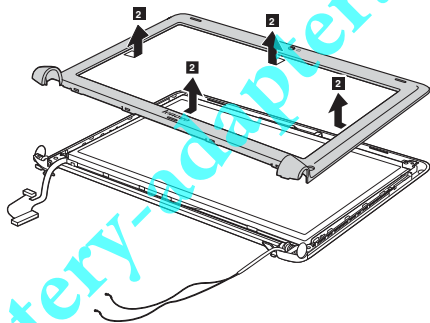
Figure 13. Removal steps of LCD front bezel

Remove two screws ■.



| Step | Screw (quantity) | Color | Torque |
|------|----------------------------------------|-------|-----------|
| ■ | M2 × 5 mm, flat-head, nylok-coated (2) | Black | 1.2 kgfcm |

Remove the LCD front bezel in the direction shown by arrows ■.



// IdeaPad S10-3c Hardware Maintenance Manual

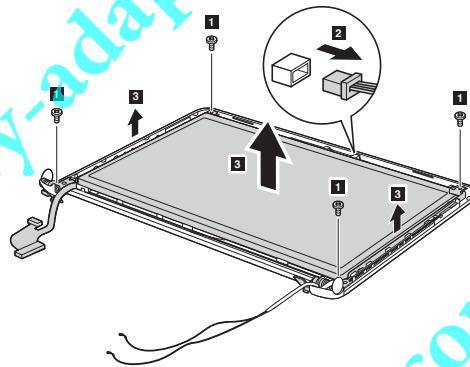
1140 LCD panel, LCD cable and hinges

For access, remove these FRUs in order:

- "1010 Battery pack" on page 34
- "1030 Hard disk drive (HDD) slot cover and HDD" on page 36
- "1060 PCI Express Mini Card for wireless LAN/WAN" on page 40
- "1070 Keyboard cover, keyboard and LED board" on page 42
- "1080 LCD unit" on page 45
- "1130 LCD front bezel" on page 59

Figure 14. Removal steps of LCD panel, LCD cable and hinges

Remove four screws **1**. Detach the integrated camera connector **2**. Remove the LCD panel in the direction shown by arrows **3**.



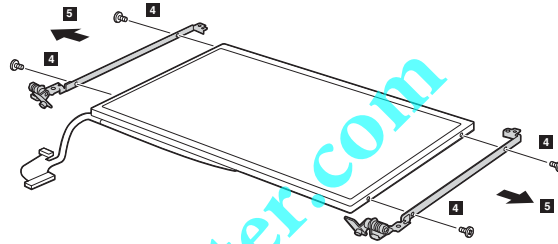
When installing: Make sure that the connector is attached firmly.

| Step | Screw (quantity) | Color | Torque |
|----------|----------------------------------------|-------|-----------|
| 1 | M2 × 3 mm, flat-head, nylok-coated (4) | Black | 1.5 kgfcm |

Lenovo IdeaPad S10-3c

Figure 14. Removal steps of LCD panel, LCD cable and hinges (continued)

Remove four screws **4**. Release the hinges in the direction shown by arrows **5**.



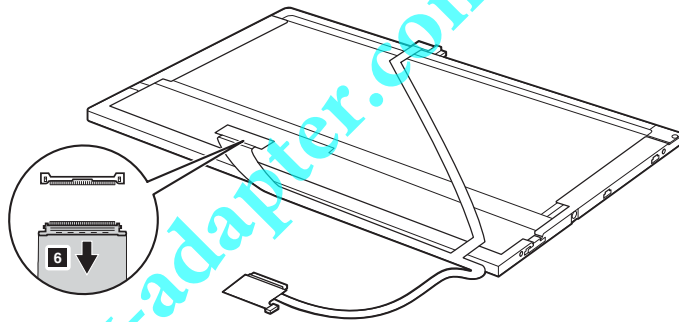
| Step | Screw (quantity) | Color | Torque |
|------|----------------------------------------|-------|-----------|
| 4 | M2 × 3 mm, flat-head, nylok-coated (4) | White | 1.5 kgfcm |

// IdeaPad S10-3c Hardware Maintenance Manual

Figure 14. Removal steps of LCD panel, LCD cable and hinges (continued)

Note: The LCD cables are attached to the LCD panel by a metal connector.

Peel off the adhesive tape and detach the metal connector in the direction shown by arrow 6.



When installing: Make sure that the metal connector is attached firmly.

Lenovo IdeaPad S10-3c

1150 Integrated camera

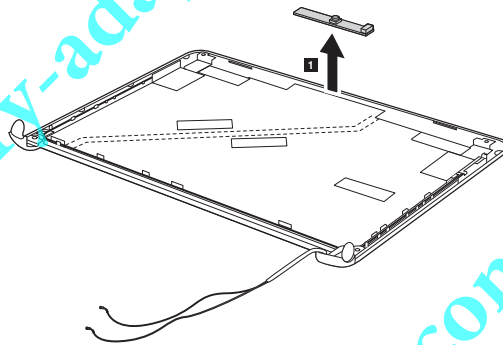
For access, remove these FRUs in order:

- "1010 Battery pack" on page 34
- "1030 Hard disk drive (HDD) slot cover and HDD" on page 36
- "1060 PCI Express Mini Card for wireless LAN/WAN" on page 40
- "1070 Keyboard cover, keyboard and LED board" on page 42
- "1080 LCD unit" on page 45
- "1130 LCD front bezel" on page 59
- "1140 LCD panel, LCD cable and hinges" on page 60

Figure 15. Removal steps of integrated camera

Note: The integrated camera is stuck on the top center of the LCD cover.

Remove the integrated camera from the LCD cover ■.



When installing: Stick the integrated camera to the top center of the LCD cover and adjust the placement of it to make sure the connector is attached firmly.


// IdeaPad S10-3c Hardware Maintenance Manual

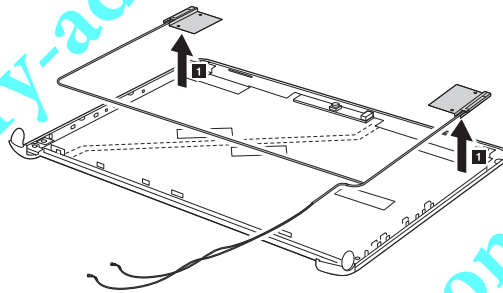
1160 Antenna assembly and LCD cover

For access, remove these FRUs in order:

- "1010 Battery pack" on page 34
- "1030 Hard disk drive (HDD) slot cover and HDD" on page 36
- "1060 PCI Express Mini Card for wireless LAN/WAN" on page 40
- "1070 Keyboard cover, keyboard and LED board" on page 42
- "1080 LCD unit" on page 45
- "1130 LCD front bezel" on page 59
- "1140 LCD panel, LCD cable and hinges" on page 60

Figure 16. Removal steps of antenna assembly and LCD cover

Peel off the adhesive tapes securing the antenna boards, release the cables from the cable guide, and then remove the antenna assembly in the direction shown by arrows .



When installing: Route the antenna cables along the cable guides and secure the antenna boards with adhesive tapes. As you route the cables, make sure that they are not subjected to any tension. Tension could cause the cables to be damaged by the cable guides, or a wire to be broken.