

How to disassemble Toshiba Satellite L755, L755D, L750, L750D laptops

Today I'll show how to dismantle a Toshiba Satellite L755 laptop. I'll be taking apart the laptop case and removing major internal components.

All dismantling steps should be the same for the following (identical) Toshiba models:

- Toshiba Satellite L755D.
- Toshiba Satellite L750.
- Toshiba Satellite L750D.

Here are main laptop disassembly steps:

STEP 1- 5: Removing laptop hard drive and DVD drive. Accessing memory modules, CMOS battery, wireless card.

STEP 6- 13: Disconnecting and removing laptop keyboard.

STEP 14-20: Removing top cover assembly.

STEP 21-27: Disconnecting and removing laptop motherboard.

STEP 28-29: Accessing the cooling fan and DC jack harness.

Step 30-44: Replace the laptop screen



STEP 1

Make sure the laptop is turned off before you start dismantling it.

Unplug AC adapter. Unlock and remove laptop battery.



STEP 2

Unscrew five screws securing the hard drive cover and memory cover.

Lift up covers and remove them from the laptop.



STEP 3

When both covers removed you can access the laptop hard drive, CMOS battery, wireless card and both memory modules.

It's not necessary to remove the wireless card and memory modules for the purpose of my guide. I'll leave them connected to the laptop.

Remove one screw securing the hard drive mounting bracket to the laptop case.



STEP 4

Slide the hard drive assembly to the left to disconnect it from the motherboard.

Lift up and remove the hard drive assembly.

Toshiba Satellite L755, L755D, L750, L750D laptops have a regular 2.5" SATA hard drive installed. If you are replacing the hard drive, you'll have to transfer the mounting bracket to the new drive.



STEP 5

Remove one screw securing the DVD optical drive.

Pull the drive to the left to disconnect it from the motherboard.

Remove DVD drive.



STEP 6

Remove one screw located in the battery compartment.

This screw securing the keyboard bezel.



STEP 7

Turn the laptop over and carefully lift up the keyboard bezel with a small screwdriver.

Continue removing the bezel with your fingers. You'll have to wiggle it a little bit in order to separate from the laptop.



STEP 8

Remove four screws securing the keyboard.



STEP 9

After all four screws removed you should be able to lift up the top side of the keyboard and turn it upside down.

Place the keyboard on the palmrest. Be careful, the keyboard still connected to the motherboard.



STEP 10

It's necessary to unlock the connector and release the cable before removing the keyboard.

In the following two steps I explain how to unlock the connector.

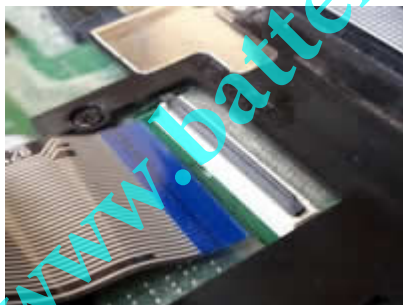


STEP 11

The connector has two pieces:

1. The white base which is soldered to the motherboard.
2. The brown locking tab - the moving part.

Carefully lift up the left side of the locking tab so it opens up at a 90 degree angle.



STEP 12

Now you can pull cable from the connector.



STEP 13

Remove the keyboard.



STEP 14

Remove shown screws from the bottom of the laptop.



STEP 15

Don't forget two more screws in the DVD drive bay.

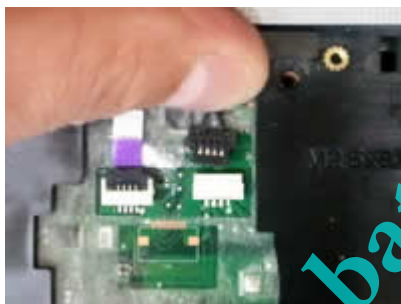


STEP 16

Remove screws securing the top cover assembly.

Disconnect the touchpad cable (1). Use same technique as for disconnecting the touchpad cable.

Disconnect the speaker cable (2).



STEP 17

The speaker cable has a regular male-female type connector.



STEP 18

Start separating the top cover assembly from the laptop base using a piece of plastic (I'm using the guitar pick).

Continue separating the top cover from the base with your fingers.



STEP 19

Remove the top cover assembly.



STEP 20

On the bottom part of the top cover you can access both speakers, touchpad and touchpad button board.



STEP 21

After the top cover assembly removed you can access the following internal laptop components:

- Power button board.
- DC jack.
- USB board.
- Motherboard.



STEP 22

Remove three screws securing the motherboard and cooling fan assembly.

Disconnect the USB board cable (1) and power button board cable (2). Use same technique as for disconnecting the keyboard cable.



STEP 23

Carefully unglue the protective film from the laptop case.



STEP 24

In order to remove the motherboard it's necessary to disconnect the DC jack cable and both wireless card antennas.

They are located under the memory cover which we removed in the step 2.



STEP 25

Start removing the motherboard as it shown on the picture.



STEP 26

Remove motherboard from the laptop base.



STEP 27

On the bottom side of the motherboard you can access the cooling fan assembly and CMOS battery (on the left side from the wireless card).



STEP 28

In order to remove the cooling fan assembly (fan and heatsink) you'll have to loosen four screws and disconnect the fan cable.

After that carefully lift up the assembly and separate it from the processor.



STEP 29

The DC jack is attached to the harness.

If the DC jack failed, you can remove the whole harness and replace it with a new DC jack harness.

How to replace screen on Toshiba Satellite L755, L755D, L750, L750D



STEP 30

There are four screw covers on the screen bezel. One cover in each bezel corner.



STEP 31

Remove all four covers with a sharp object.

Glue covers (they have sticky tape on the bottom) somewhere on the bezel so they don't get lost during the disassembly process.



STEP 32

Start separating the screen bezel from the display back cover.

Here's how I do it:

- insert your fingers between the bezel and LCD screen on the top of the display assembly.
- insert the guitar pick (you can use any other piece of plastic) between the bezel and back cover and slowly move it along the side.
- at the same time wiggle the bezel to unlock hidden latches inside the display.



STEP 33

Continue separating the screen bezel from the display assembly.

STEP 34



It was kind of difficult to separate the bezel from the display on the bottom.

Close the display and using the same guitar pick separate the screen bezel from the display on the bottom.

The picture shows the battery compartment area of the laptop.

STEP 35



Now start separating the bezel from the display hinges.

Insert a small flathead screwdriver under the hinge cover (part of the screen bezel) and carefully lift it up.

Do the same with the hinge cover on the left side of the display.

STEP 36



Remove the screen bezel.



STEP 37

Disconnect the cable from the right side of the web camera module.

NOTE: the web camera is not part of the display. It's a separate module.



STEP 38

Separate the LCD screen from the display back cover just enough to access screws on the side.

Remove two screws securing the LCD screen to the right hinge bracket.



STEP 39

Remove two more screws securing the LCD screen to the left hinge bracket.



STEP 40

Now you can separate the LCD screen from the display back cover and place it face down on the palmrest.



STEP 41

The video cable glued to the back of the screen with sticky tape.

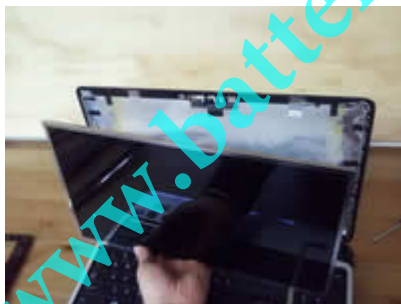
As you see, the web camera cable is part of the video cable harness.

I circled the video cable connector.



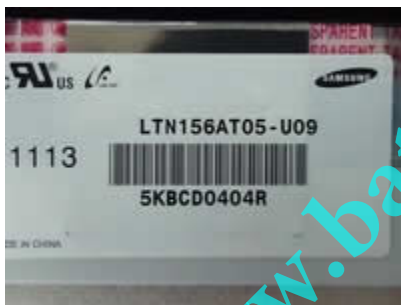
STEP 42

Unglue sticky tape securing the connection and unplug the video cable connector from the LCD screen.



STEP 43

Remove the LCD screen. It's ready for the replacement.



STEP 44

Also you can search for a new replacement screen using the model number from the original screen.

The model number printed on the back side of the screen. In my Toshiba Satellite L755 laptop I had the following screen installed:
LTN156AT05-U09

There could be more than one screen compatible with this laptop.

